

Y-UK-SR811-Hybrid

Call Station with Integrated Camera



Dual Path
Operation

Built-In
Solution

c **UL** us
LISTED

Bespoke
Availability

Loud and
Clear

Vandal
Resistant

Overview

The Y-UK-SR811-Hybrid call station is a Robust, IP/GSM, vandal and weather resistant Help Point, which is designed to work with any appropriate commend platform. IP enabled allows for simplified installation and remote maintenance access and clear audio/video communication along with back-up GSM facility.

Yellow LED lit stainless steel push buttons are used as standard, but with an option to have bespoke units with large mushroom style mechanical buttons if requested. When pushed, the vandal resistant push button illuminates yellow to assist the partially sighted.

The Y-UK-SR811-Hybrid is equipped with the IM3, a powerful basic-core communication module, and the CM1, a HD colour camera module that allows the operators to get a full overview of the situation they are handling. The IM3 module enhances the customer experience by providing market leading audio quality at 20khz which is the full spectrum of human hearing, with built in features such as background noise cancellation and automatic volume control. The CM1 camera is able to send out up to seven video streams all at different resolutions. This gives you the capacity to continually record a lower resolution stream but then automatically record higher resolution, clearer images when an event or action is triggered.

The Y-UK-SR811-Hybrid also consists of a back-up GSM module that can be replaced by an M2M data board. In the event of a loss of IP network, the unit remains operational by automatically switching to the back up network. When using the M2M board, video also switches. .

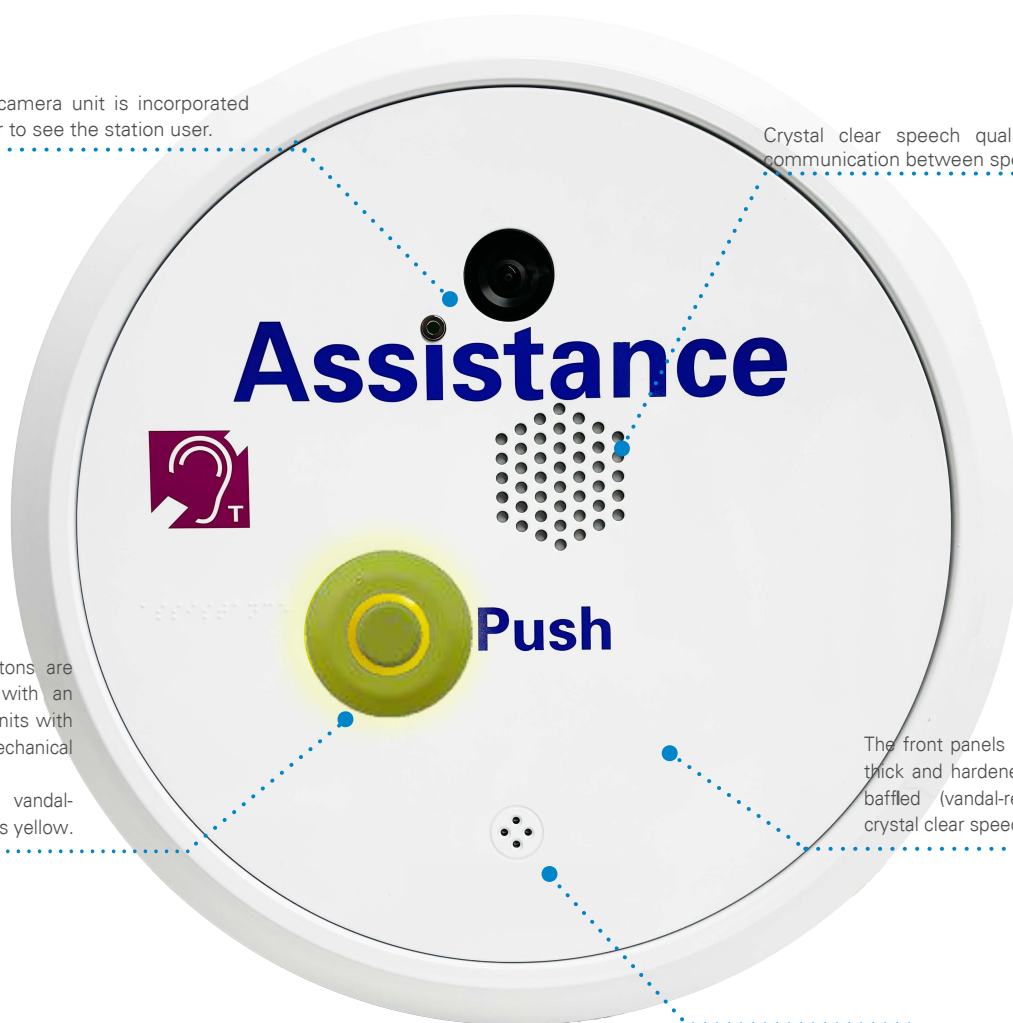
Features and highlights

- IM3 (20 khz)
- AFIL-USB
- GSM Module
- I/O Module
- Built-in camera video processor
- Suitable for indoor and outdoor areas
- High protection against vandalism (mechanical impact resistance IK07)
- 3 mm (0.12 in) thick and hardened front glass
- Durable to wind and weather thanks to high-quality
- Well-thought-out housing concept for an easy and safe mounting
- Wide Dynamic Range (WDR)
- Loud & clear hands free speech
- Double baffled vandal resistant loudspeaker
- Wall or pedestal mounted - Hood dependent
- Surface and flush mounts available
- Bespoke stations are available to meet specific corporate identity and street furniture
- Braille
- Full colour

Key benefits at a glance

An integrated cm1 camera unit is incorporated allowing the operator to see the station user.

Crystal clear speech quality enables perfect communication between speaker and receiver.



Stainless steel push buttons are used as standard, but with an option to have bespoke units with large mushroom-style mechanical fronts.

When pushed, the vandal-resistant button illuminates yellow.

The front panels are manufactured in 3 mm thick and hardened front glass, with double baffled (vandal-resistant) loudspeaker for crystal clear speech quality.

Microphone for clear communication and background noise cancellation and automatic volume control.

Y-UK-SR811-Hybrid

Technical Specifications

Technical Data

Loudspeaker	≥ 8 Ohm
Plug: - IP Uplink / Downlink - Expansion plug for e.g. EB2E2AHE	Shielded RJ45 modular jacks
Cabling	Min. cat 5
Power Supply	PoE
Data rate	Autosense (10/100 MBit/s, full/half duplex)
PoE (Power over Ethernet)	IEEE 802.3af standard Power consumption of the terminal device: class 0 (0.44 W to 12.95 W)

Microphone

Microphone	2 microphone inputs sensitivity (electret condenser microphone): -43 dBV/Pa feeding voltage: 3.3 V at 4.3 kΩ
Loudspeaker output:	power: 5 W (RMS) at 8 Ω, 6.1 W (RMS) at 4 Ω, max. 10 W (peak) total harmonic distortion (THD+N): < 0.2% loudspeaker impedance: ≥ 4 Ω
Amplifier:	integrated, highly efficient Smart Audio Amplifier, 6.1 W
Audio bandwidth:	up to 20 kHz
Audio codecs:	Opus, G.722, G.711 a-law and G.711 u-law
Sound pressure level (with LSM):	max. 98 dB at 0.5 m (1.6 ft)/92 dB at 1 m (3.3 ft)
Camera resolution:	max. 1280 x 960 Pixel
Video streaming:	simultaneously up to 6 HTTP(S)/RTSP H.264 video streams with individual resolution or frame rate or simultaneously up to 6 HTTP(S) MJPEG video streams with the same resolution and frame rate
Video features ³⁾:	codecs: H.264 (SIP video and ONVIF), MJPEG (HTTP video and ONVIF) and RTSP ONVIF specification: ONVIF Profile S
IT security:	ISO-27001-certified manufacturer, SIP over TLS, SRTP, IEEE 802.1X, MJPEG via HTTPS, HTTPS for accessing the web interface and interfaces, X.509 certificates
Protocols:	IPv4, IPv6, TLS, TCP, UDP, HTTP (RFC 2617, RFC 3310), HTTPS (RFC 2818), RTP (RFC 3550), 802.1x EAP-TLS (RFC 5216), 802.1x EAP-MD5 (RFC 2284), RTCP, RTSP (RFC 2326), DHCP, DHCPv6, DNSv4, DNSv6, mDNS, SDP (RFC 2327, RFC 4566), SSDP, SIP (RFC 3261), SIP over TLS, SNMPv2c, STUN (classicstun), SMTP, DTMF Decoding (RFC 2976, RFC 2833, SIP Info), ICMPv6 (Router discovery), MQTT (ISO/IEC 20922)
Power supply:	PoE: IEEE 802.3at/Type 1 ⁴⁾ 12.95 W

Network

Security	Password protection, IP address filtering, HTTPSa encryption, IEEE 802.1X (EAP-TLS) a network access control, Digest authentication, User access log, Centralized certificate management, brute force delay protection, signed firmware
Supported Protocols	v6, HTTP, HTTPSa, SSL/TLSa, QoS Layer 3 DiffServ, FTP, CIFS/SMB, SMTP, Bonjour, UPnP, SNMPv1/v2c/v3 (MIB-II), DNS, DynDNS, NTP, RTSP, RTP, SFTP, TCP, UDP, IGMPv1/v2/v3, RTCP, ICMP, DHCP, ARP, SOCKS, SSH, LLDP, MQTT v3.1.1

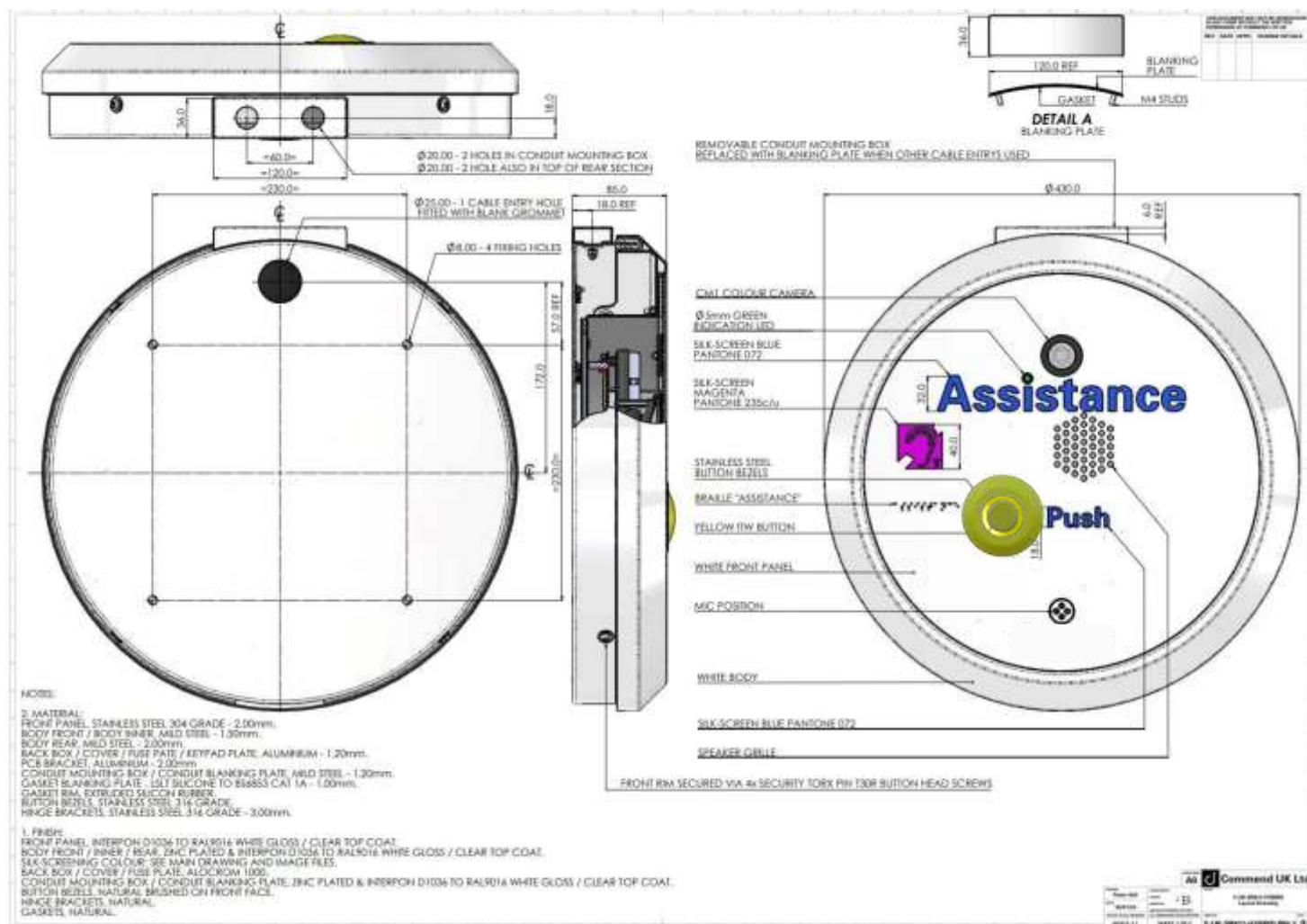
Camera

Lens:	F2.4, fixed aperture, 150° diagonal angle, 145° horizontal angle, 123° vertical angle
Minimum illumination:	colour: 1.5 lux
Resolution (W x H):	max. 1920 x 1080 pixels ²⁾
Frame rate:	up to 30 fps
Video features:	codecs: H.264 (SIP video and ONVIF), MJPEG (HTTP video and ONVIF) and RTSP ONVIF specification: ONVIF Profile S
Approvals and compliances:	EN 61000-6-2, EN 61000-6-4, EN 55032 Class B, EN 55024, EN 55035, EN 62368-1 FCC Part 15 Class B, ICES-003 Class B IEC/EN/UL 62368-1, CB-Scheme (by UL), UL Listed (E351589)

GSM 4G Router

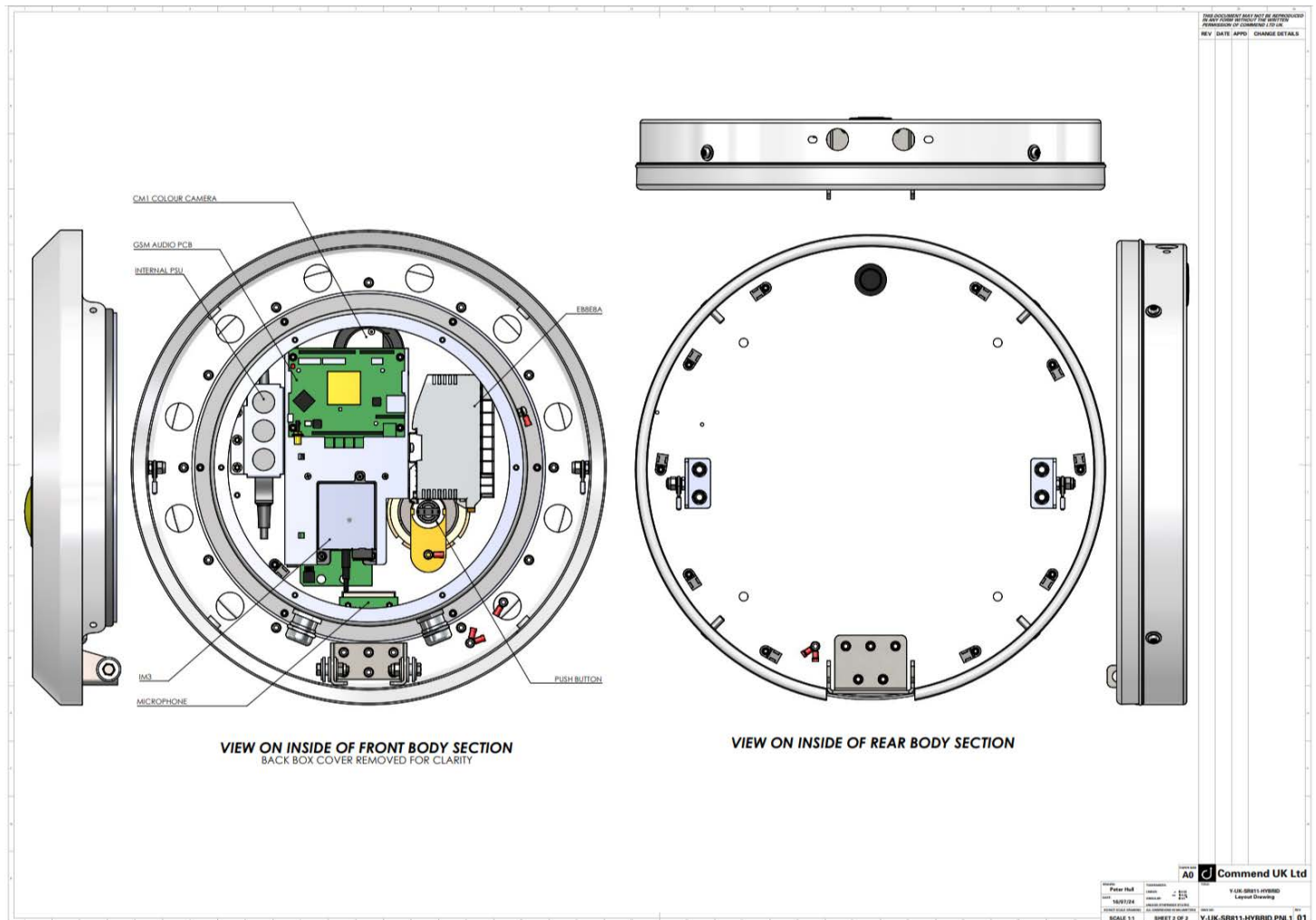
Ringin:	Through Internal Speaker
Time out:	Selectable 0-20 minutes
Programming:	Remotely programmed via SMS
Health status:	Remotely via SMS on demand Auto Health status report: configurable via SMS
Reporting:	Via SMS (up to 3 numbers) Low battery Button scan I/O status
Operating temperature range:	-30 °C to 60 °C (-22 °F to 140 °F)
Storage temperature range:	-40 °C to 70 °C (-40 °F to 158 °F)
Relative humidity:	up to 95%, not condensing
Power supply:	External 6-24VDC - 12VDC optimal, 2A recommended (3A where AFIL is required) Typical current draw approx. 300mA
Sim Card:	Standard (must be 4G compatible - not supplied)

Y-UK-SR811-Hybrid Dimensions



Y-UK-SR811-Hybrid

Complementary Information



Trusted. Communication. Always

For further information on our products and services, please contact

Catherine Johnston on c.johnston@commend.co.uk or **07506 100872**.

www.commend.co.uk